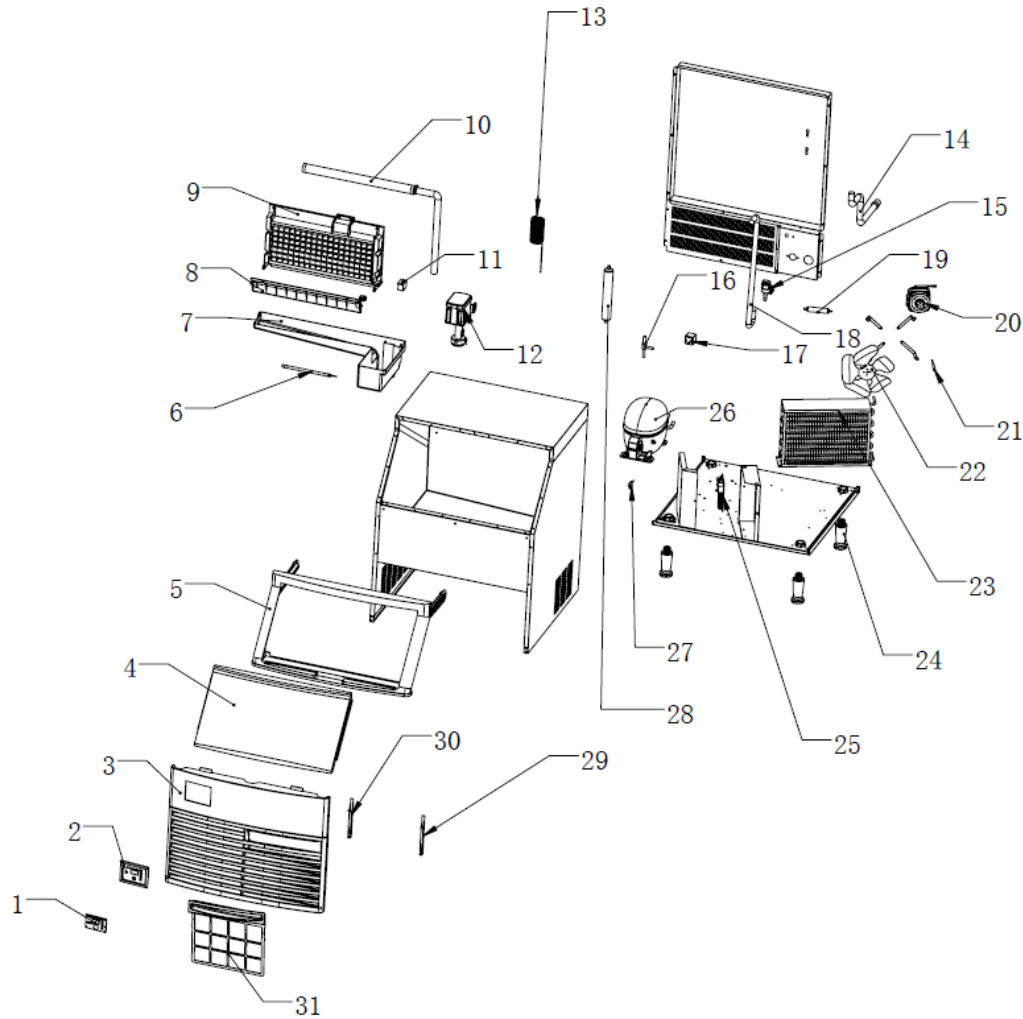


Exploded view

210P (220V/50HZ) R290



Ref	Part No.	Name	Specification
1	08.0.0076-00	Display board 66414762-01	With cleaning button
2	54.0.0085-00	Control panel assembly /Vertical ice machine	
3	04.0.0014-03	Front vent window -160/210/280	ABS injection molding
4	52.0.0005-03	Door panel assembly -Black gray	160/210/280
5	52.0.0002-03	Door frame assembly -Black gray	160/210/280
6	08.6.0001-00	Cold light	white 150*11*11 LED 6 lamps
7	04.0.0027-00	Water sink -160	160 injection molding, overflow, M5002
8	04.0.0046-00	Skating board -210	18 injection molding, M1072
9	06.3.0006-00	Evaporator -210	5 rows * 18 columns
10	51.1.0005-00	Spray pipe assembly	18 columns
11	08.1.0106-00	Ice full sensor	wire length 1390mm, with silicone sleeve
12	55.0.0012-00	Water pump assembly -60~280	white 220V /50Hz
13	03.2.0364-00	Capillary -120/160/41/51	TP2M-OD2.8*ID1.27*T/*2300mm
14	03.0.0042-00	Outside drain	gray color, 1.6m, M26
15	06.6.0018-00	Water inlet valve	220~240V 50/60Hz 180A5
16	06.4.0002-00	Defrost valve	6A
17	06.4.0043-00	Defrost Valve Coil	220~240VAC Tianhao 50/60Hz 6A 750mm
18	03.0.0033-00	Silicone hose	white, φ14*φ9.5
19	06.5.0004-00	Filter Dryer	φ19*150*3.1*6.5
20	06.1.0003-00	EBMPAPST Fan	M4Q045-CA03-51 36/ 10W 230VAC 50/60Hz Wire length 970mm
21	08.1.0025-00	Condensation Sensor	stainless steel probe 1000mm
22	06.1.0031-00	Fan blade	φ230 28°
23	06.0.0003-00	Condenser -210	air-cooled 200A
24	04.0.0166-00	Feet assembly	short, stainless steel
25	08.0.0142-01	PC Board	PC-446
26	06.2.0217-00	Compressor NPY12RA	208~230V 50/60Hz R290
27	08.1.0036-00	LED light magnetic switch	1800mm
28	06.5.0003-00	Gas-liquid separator	φ35*250*8.1*8.1
29	04.0.0189-00	Filter right slot -160/210/280	
30	04.0.0188-00	Filter left slot -160/210/280	
31	04.0.0016-03	Vent window filters -160/210/280	