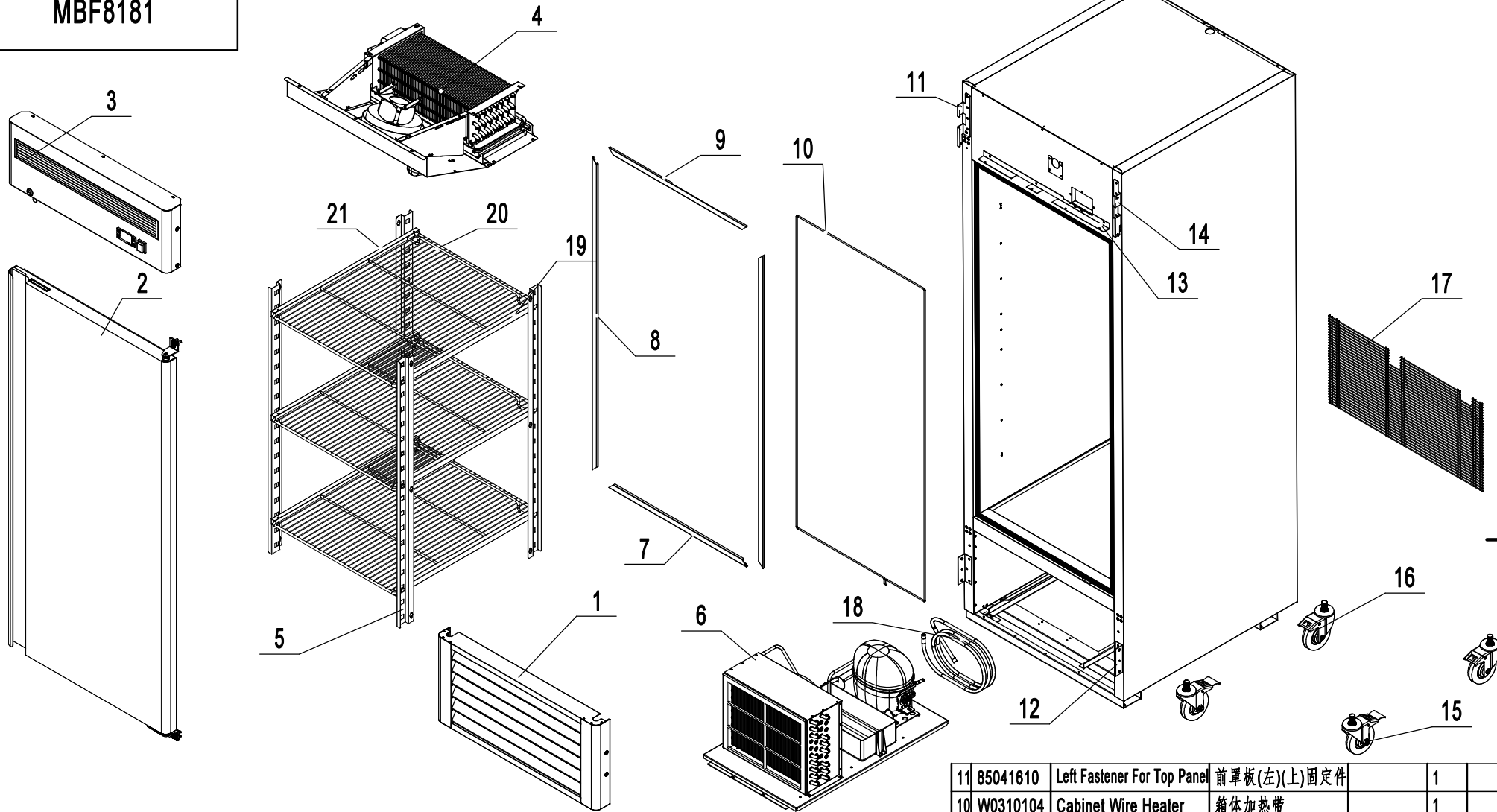


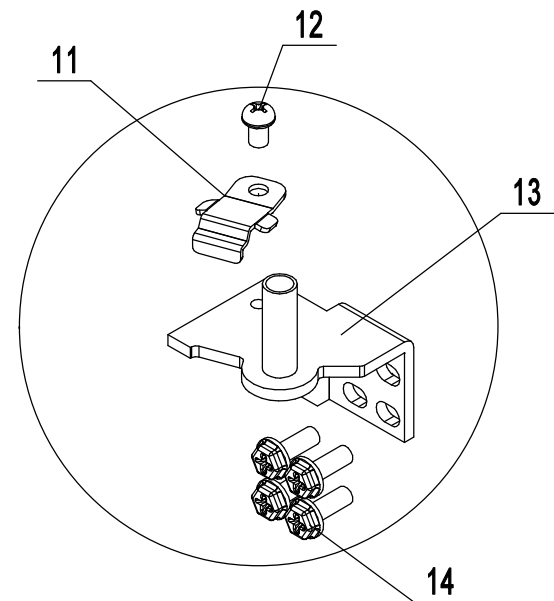
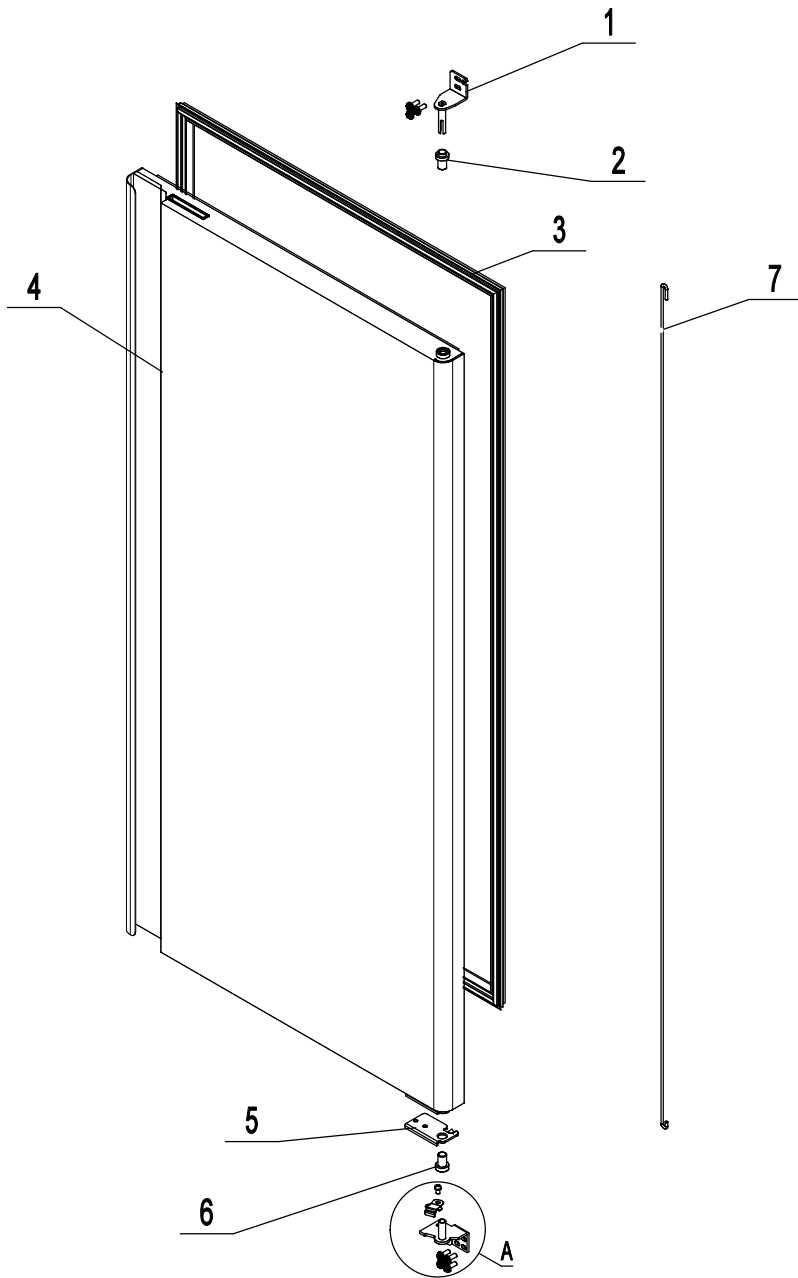
MBF8181



21	80037407	shelf left chute	隔条(滑槽)左	SUS201	3
20	W0402040	Shelf	食品架		3
19	80037407	shelf right chute	隔条(滑槽)右	SUS201	3
18	W0210318	Low Pressure Coil Back to Comp	回气管(B)		1
17	W0402273	Back Bottom Barriar	保护网		1
16	B0604413	4" Castor Without Brake	4吋重磅万向轮(脚轮)		2
15	B0604421	4" Castor With Brake	4吋带刹车重磅万向轮(制定向)		2
14	85041609	Right Fastener For Top Panel	前罩板(右)(上)固定件		1
13	85041611	BottomFastener For Top Panel	前罩板(右)(下)固定件		1
12	85041801	Fastener For Bottom Panel	下罩板固定件		2

11	85041610	Left Fastener For Top Panel	前罩板(左)(上)固定件		1	
10	W0310104	Cabinet Wire Heater	箱体加热带		1	
9	W0410455	Top Frame Cover	箱体接口盖(上)		1	
8	W0410446	Left-Right Frame Cover	箱体接口盖(左)(右)		2	
7	W0410456	Bottom Frame Cover	箱体接口盖(下)		1	
6	85010406	Comp&Cond Assembly	冷凝机组		1	
5	85017405	Pilastor For Shelf	食品架隔条	SUS201	4	
4	85010404	Evaporator Assembly	蒸发机组		1	
3	85010403	Top Panel Assembly	上前罩组件		1	
2	85010402	Door Assembly	门体组件		1	
1	85010401	Bottom Panel	下罩板		1	
序号	Material code	English Name	Chinese Name	MATERIAL	QUANTITY	Remark

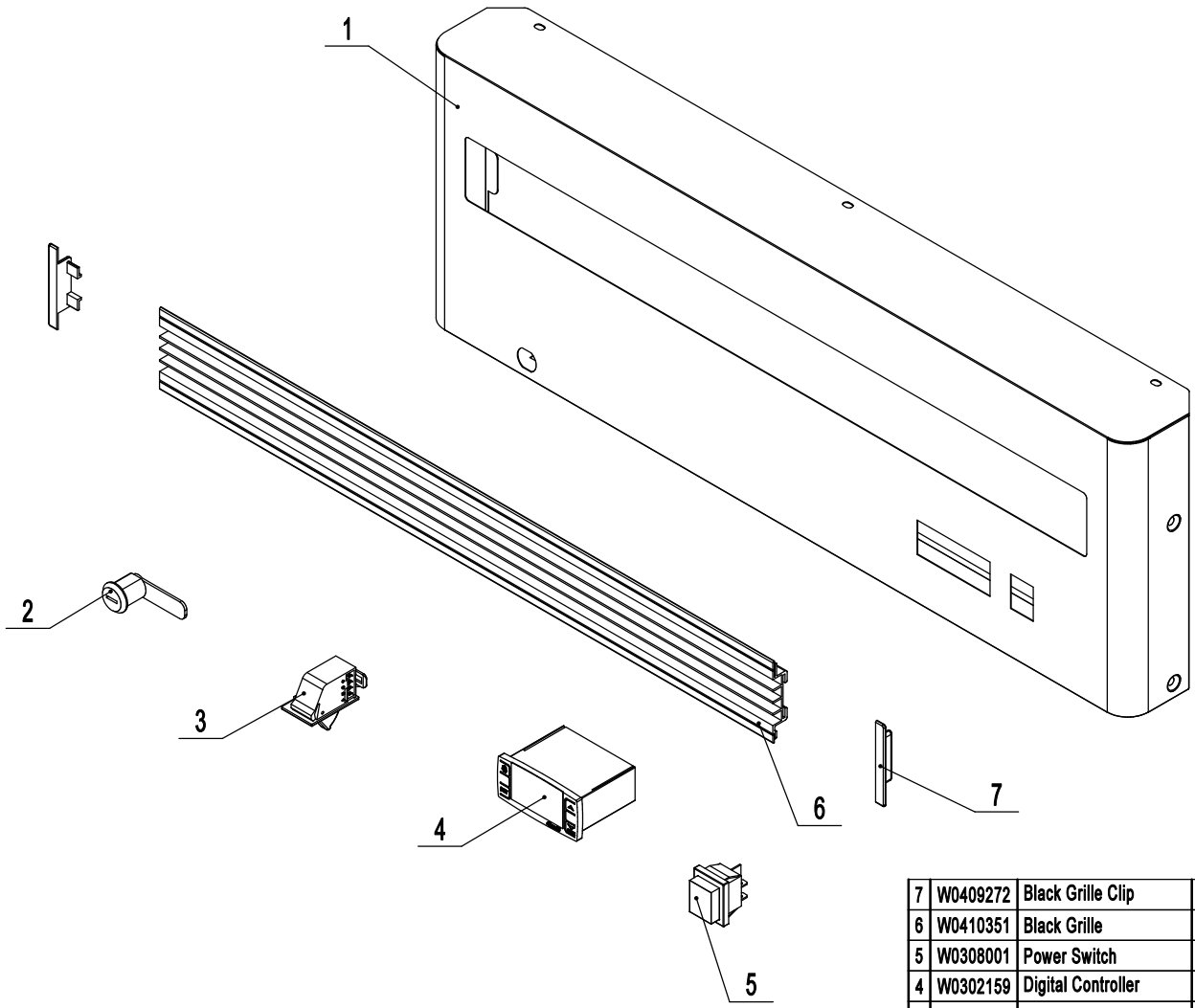
85010402



局部放大图A

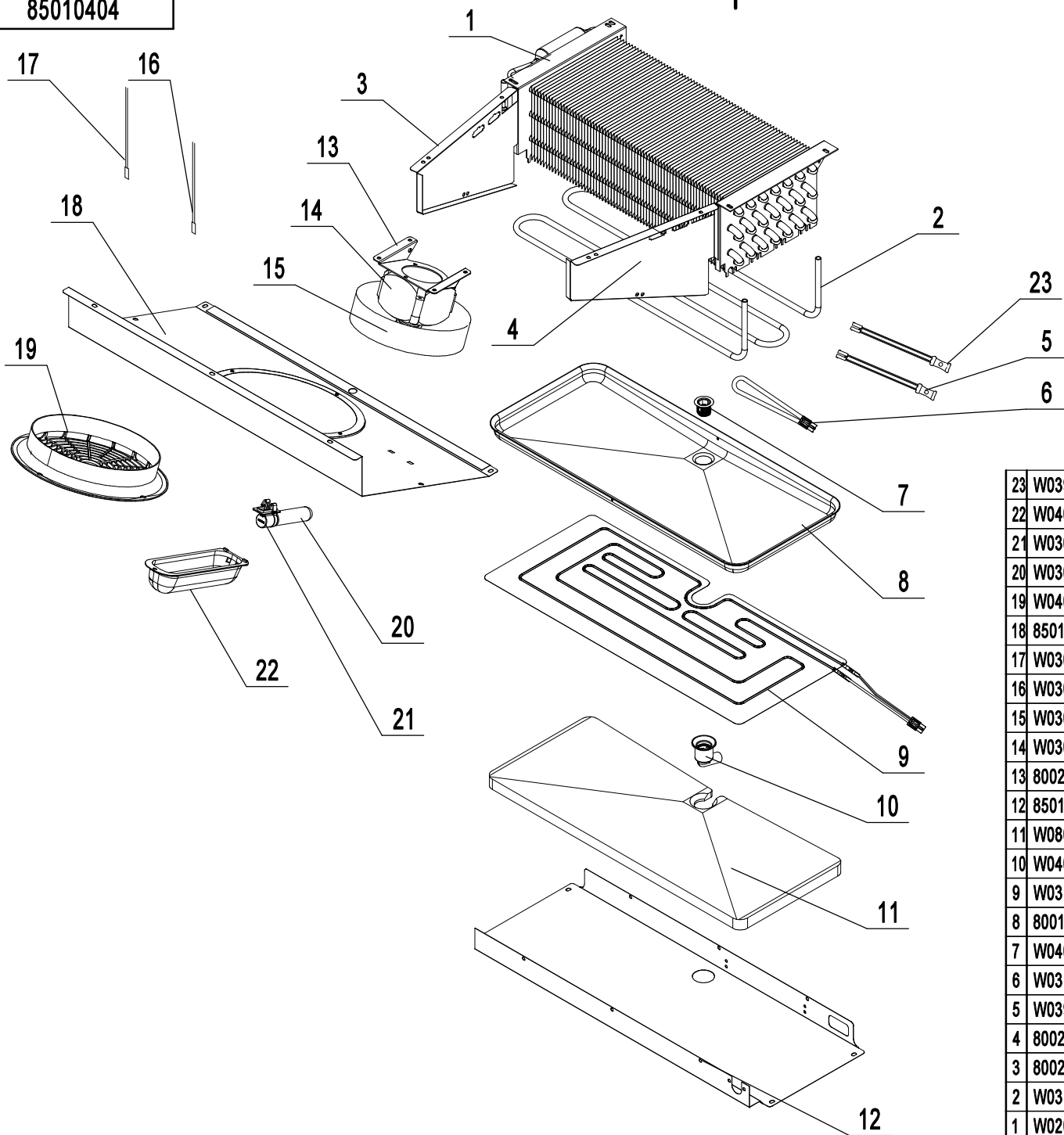
14	B0506044	Screw M6x16	M6x16十字槽六角头螺栓	7		
13	W0604024	Right-Bottom Hinge	右下铰链	SUS304	1	
12	B0599270	SS Screw M6x8	M6x8不锈钢螺丝		1	
11	W0604038	Door Brake-Bottom	门自锁装置-下	SUS304	1	
7	W0604401	Door Spring Bar	门体发条		1	
6	W0409843	Door Shaft Sleeve-Bottom	门体轴套	PA66	1	
5	W0604030	Door Brake -Right	门自锁装置-右	SUS304	1	
4	81810201	Right Door	右门体		1	
3	W0404601	Door Gasket	门封条		1	
2	W0409842	Door Shaft Sleeve-Top	门体轴套	PA66	1	
1	W0604022	Right-Top Hinge	右上铰链	SUS304	1	
序号	Material code	English Name	Chinese Name	MATERIAL	QUANTITY	Remark

85010403



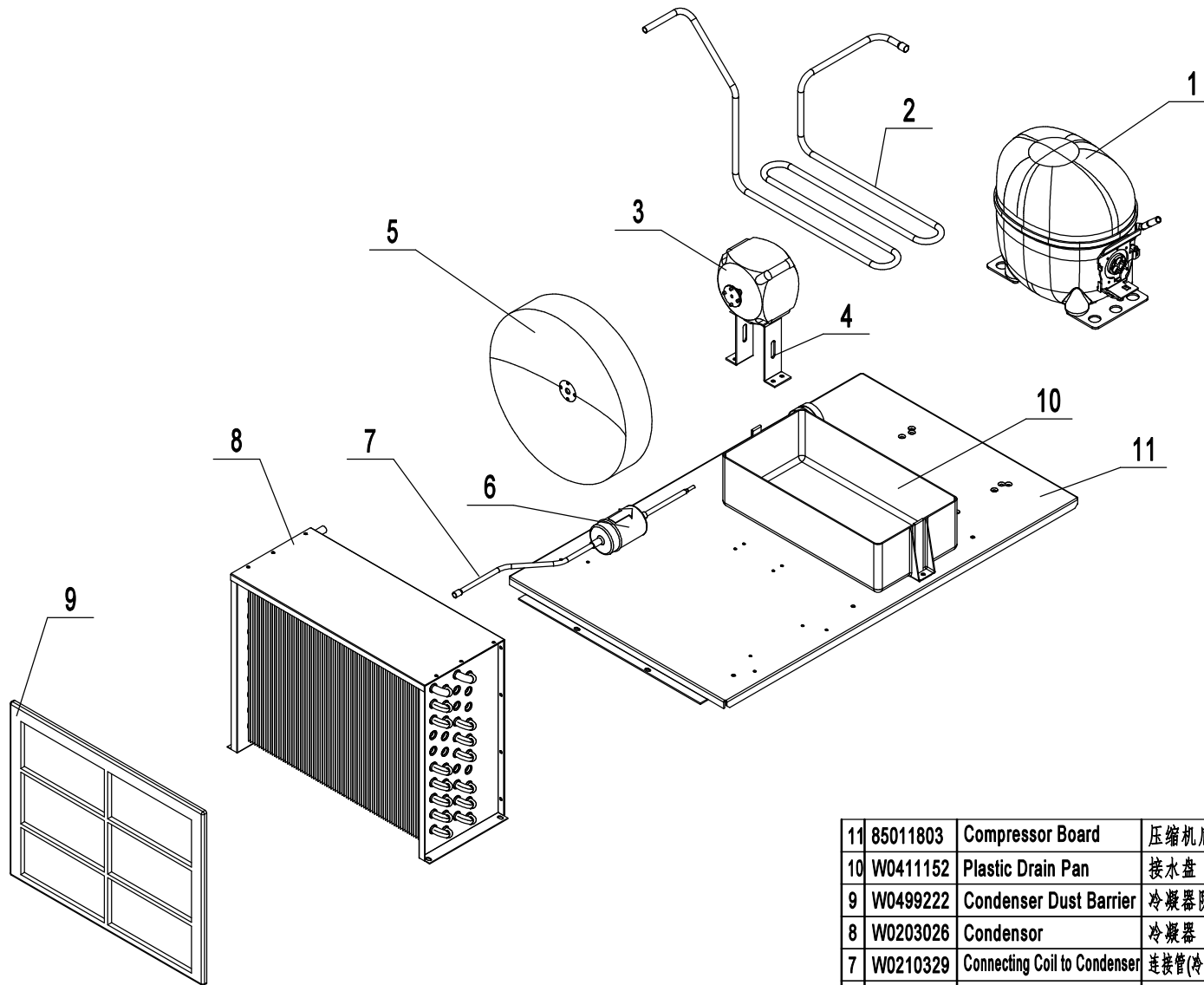
7	W0409272	Black Grille Clip	前罩板饰条端板	ABS	2	
6	W0410351	Black Grille	前罩板饰条	PVC	1	
5	W0308001	Power Switch	电源开关		1	
4	W0302159	Digital Controller	220V电子温控器		1	220V
3	W0308012	Door Switch	右门体开关(单刀双掷)		2	
2	W0604007	Lock	冰箱锁		1	
1	85011407	Top Panel	上前罩板	SUS430	1	
序号	Material code	English Name	Chinese Name	MATERIAL	QUANTITY	Remark

85010404



23	W0399079	Defrost Heater Fuse	化霜感温包(熔断式)		1	
22	W0409863	Lamp Cover	灯罩	PC1302	1	
21	W0304508	Lamp Socket	灯座		1	
20	W0304511	Lamp	灯		1	
19	W0409864	Evap Fan Motor Cover	蒸发风机罩	ABS	1	
18	85011202	Evap Front Cover	蒸发前盖板	SUS430	1	
17	W0302305	Evap Temp Probe	化霜探头		1	
16	W0302304	Room Temp Probe	感温探头		1	
15	W0301059	Evap Fan Blade	蒸发风叶	AL/Ø172	1	
14	W0301906	Evap Fan Motor	蒸发风机		1	
13	80021501	Evap Fan Bracket	蒸发风机支架	SUS304	1	
12	85011201	Drain Pan Cover	蒸发后盖板	SUS430	1	
11	W0803011	Drain Pan Foam	接水盘泡沫	EPS	1	
10	W0409858	Drain Hose Connector A	排水管连接器A	PA66	1	
9	W0310080	Drain Pan Heater	接水盘加热带		1	
8	80012001	Drain Pan	铝制接水盘	AL	1	
7	W0409859	Drain Hose Connector B	排水管连接器B	PA66	1	
6	W0310067	Drain Hose Heater	排水管加热带		1	
5	W0399078	Defrost Heater Fuse	化霜感温包(突跳式开关)		1	
4	80021204	Evap Right Cover	蒸发空气右挡板	SUS430	1	
3	80021203	Evap Left Cover	蒸发空气左挡板	SUS430	1	
2	W0311042	Defrost Heater	化霜加热管		1	
1	W0202112	Evaperator	蒸发器	AL TP2-M	1	
序号	Material code	English Name	Chinese Name	MATERIAL	QUANTITY	Remark

85010406



11	85011803	Compressor Board	压缩机底板	GI	1	
10	W0411152	Plastic Drain Pan	接水盘	ABS	1	
9	W0499222	Condenser Dust Barrier	冷凝器防尘罩		1	
8	W0203026	Condensor	冷凝器	GI TP2-M	1	
7	W0210329	Connecting Coil to Condenser	连接管(冷凝器-干燥过滤器)	TP2-M	1	
6	W0204003	Dry Filter	干燥过滤器		1	
5	W0301056	Condenser Fan Blade	冷凝风叶	AL/Ø250	1	
4	80031601	Condenser Fan Bracket	冷凝风机支架	GI	1	D
3	W0301907	Condensor Fan	冷凝风机		1	
2	W0210330	High Pressure Coil	散热管	TP2-M	1	
1	W0201418	Compressor	压缩机		1	
序号	Material code	English Name	Chinese Name	MATERIAL	QUANTITY	Remark